

Esthetic Colorant

Natural Lifelike Colors
Shine From Within



In Living Color

Esthetic Colorant



Every tooth has unique internal shade structure. With unique raw materials and color structure, specifically developed for the "KATANA™ Zirconia" Multi Layered series, Esthetic Colorant enables you to easily and efficiently imitate a variety of these unique characteristics.

FEATURES & BENEFITS

LIFELIKE OUTCOMES

MAINTAINING THE ORIGINAL STRENGTH OF "KATANA™ ZIRCONIA"

COMPACT LINE-UP FOR SIMPLIFIED PROCEDURES

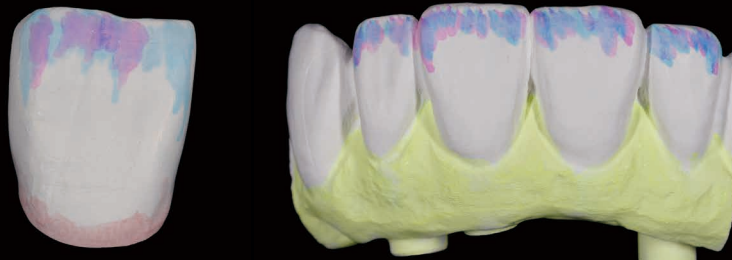
EFFICIENT PROCEDURES FOR LIFELIKE RESULTS

1. PREPARATION



To achieve consistent results, any dust or grease must be removed from the surface of the pre-sintered zirconia before applying the liquid. When cleaning with an ultrasonic device, after cleaning, dry in a drying oven at 80°C/176°F or higher for 1 hour or longer.

2. COLORING



3. DRYING

Dry at 80 - 200°C / 176 - 392°F for at least 30 minutes. Use a ceramic tray to avoid contact with metal.



4. SINTERING

Sinter the restoration according to the preferred sintering schedule*.



5. FINISHING

After sintering, finalize the restoration by polishing, glazing, or porcelain layering.



CERABIEN™ ZR FC Paste Stain
Available in 27 shades, for the reproduction of an extensive case variety.



*For the Multi Layered series, 54-minute, 90-minute, and 7-hour sintering schedules are available.

Simple Procedure for Lifelike Results

MASKING THE ABUTMENT

WHITE and OPAQUE can be used for masking the abutment color from inside a crown.
Brush inside of crown with either WHITE or OPAQUE to increase opacity and control value.



Apply Esthetic Colorant OPAQUE



After application



After sintering the restoration

Comparison of restorations with/without Esthetic Colorant OPAQUE



Metal abutment





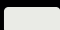



KATANA™ Zirconia YML A2
• Metal abutment



KATANA™ Zirconia YML A2
• Esthetic Colorant OPAQUE
• Metal abutment

SHADE APPLICATION

| | | |
|---|--------|--|
|  | GRAY | Used to reproduce the grayish enamel color of the occlusal surface and cusp. |
|  | BLUE | Used to reproduce the blueish enamel color of the occlusal surface and cusp. |
|  | VIOLET | Used to reproduce the reddish-blue enamel color of the occlusal surface and cusp. |
|  | PINK | Used to give a pale pink. (the base of the gingiva) *After sintering, fluorescence derived from the element is visible. Completely cover the surface of the applied area with porcelain which does not contain fluorescent agents, such as "CERABIEN™ ZR Tissue". |
|  | WHITE | Used to give high value white opacity. |
|  | OPAQUE | Used to give pale yellow opacity. |

*The color image displayed is based on the color data when each color is impregnated and sintered in 1.0 mm of pre-sintered zirconia pellets.
Each color image shows the deepest color tone.
When using the brush-painting technique, adjust the number of applications according to the desired color tone.

ESTHETIC COLORANT IN ACTION

1 Milled KATANA™ Zirconia YML

Designed for pre-sintered KATANA™ Zirconia Multi Layered series, such as YML, HTML PLUS, STML or UTML to perfectly complement desired effects.



2 Esthetic Colorant Applied

Brush Painting Technique:

Apply the required amount of liquid to the zirconia surface by using Liquid Brush Pen or metal-free brush.



3 Completion

After sintering, finalize restoration by polishing, glazing, or porcelain layering with CERABIEN™ ZR FC Paste Stain.



ESTHETIC COLORANT LINE-UP

| | | |
|----------|--------------------------|------|
| 127-0115 | Esthetic Colorant GRAY | 12ML |
| 127-0125 | Esthetic Colorant BLUE | 12ML |
| 127-0135 | Esthetic Colorant VIOLET | 12ML |
| 127-0145 | Esthetic Colorant PINK | 12ML |
| 127-0155 | Esthetic Colorant WHITE | 12ML |
| 127-0165 | Esthetic Colorant OPAQUE | 12ML |

227-0019 LIQUID BRUSH PEN



A dedicated Liquid Brush Pen is available for easy control of characteristics



Kuraray Noritake Dental Inc.

300 Higashiyama, Miyoshi-cho, Miyoshi, Aichi 470-0293, Japan

Website www.kuraraynoritake.com

- Before using this product, be sure to read the Instructions for Use supplied with the product.
- The specifications and appearance of the product are subject to change without notice.
- Printed color can be slightly different from actual color.

"KATANA" and "CERABIEN" are registered trademarks or trademarks of NORITAKE CO., LIMITED